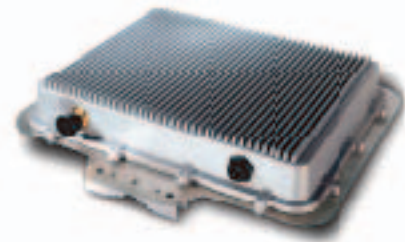


WAP-7000

802.11a Wireless LAN Outdoor Bridge



The WAP-7000 starts a new era for wireless building-to-building solution by providing high performance in 5GHz frequency. With 802.11a compliance, the WAP-7000 can avoid the interferences from other 802.11b/g devices and contributes the 54Mbps data rate. It is suited for enterprises, campus or off-site locations to extend existing wired network coverage.

The special designed housing allows WAP-7000 to be installed in exposed locations under the rigorous weather conditions including heavy rain, wind, and snow. Moreover, the WAP-7000 has built in the lightning protector for further protection. Provided with web-based interface, WAP-7000 is easy to be installed and managed. The POE (Power Over Ethernet) design reduces power cables installation cost and offers more flexibility when selecting the location of WAP-7000.

▶▶ KEY FEATURES

- Wireless LAN IEEE802.11a 5GHz compliant
- Available channels selectable conforming to local radio restrictions on 802.11a standard
- Solid housing provides protection against rigorous weather conditions
- Point-to-Point, Point-to-MultiPoint bridge
- Theoretically, the operating range can up to 17KM at 6Mbps data rate with 5GHz 18dBi antenna installed
- Adjustable output power: 100mW, 50mW, 25mW, 13mW, and 6mW
- Power over Ethernet design
- Built-in lightning protector
- Operating temperature: -20~70 degree C

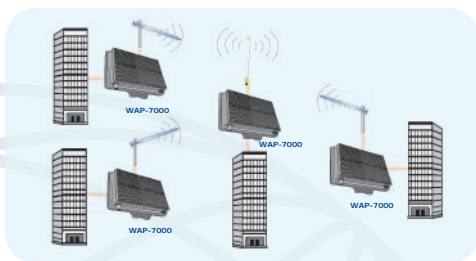
▶▶ SPECIFICATION

Product	802.11a Wireless LAN Outdoor Bridge
Model	WAP-7000
Standard support	IEEE802.11a IEEE802.3 IEEE802.3u
Interface	Wireless IEEE802.11a One 10/100 RJ-45 port
Data Rate	6, 9, 12, 18, 24, 36, 48, 54Mbps
Modulation	OFDM
RF Output Power	18dBm (typical)
Receiver Sensitivity	6 Mbps: -82dBm 9 Mbps: -81dBm 12 Mbps: -79dBm 18 Mbps: -77dBm 24 Mbps: -74dBm 36 Mbps: -70dBm 48 Mbps: -66dBm 54 Mbps: -65dBm
Media Access Technology	CSMA/CA
Lightning Protection	Built-in
Antenna Connector	N-Type
Dimensions	320m x 310mm x 48mm (W x D x H)
Weight	3.05kg
Environmental Specification	Operating temperature: -20 – 70 degree C Storage temperature: -40 – 80 degree C Relative humidity: 10% – 90% (non-condensing)
Power Requirement	48V DC, 1.7A (proprietary PoE)
Electromagnetic Compatibility	FCC, CE

▶▶ APPLICATIONS

☐ *Interference Immunity Wireless Backhaul*

With the popularity of wireless network deployment, creating the zones that provide wireless access is quick and easy nowadays. However, the challenge lies in routing the network traffic between these zones. The WAP-7000 provides a wireless backhaul solution for such application. The local zone can be covered by an 802.11b/g wireless access point. The WAP-7000 which is connected to the same network can provide a non-interference and high speed backhaul link.



▶▶ ORDERING INFORMATION

- ▶ WAP-7000 802.11a Wireless LAN Outdoor Bridge